

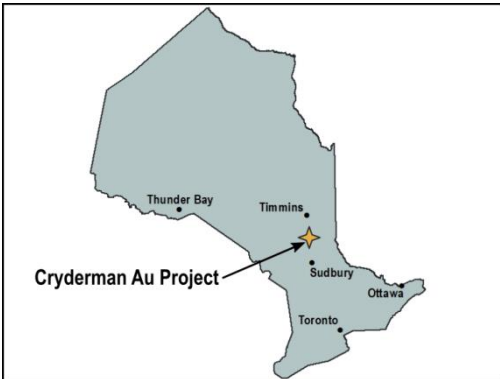
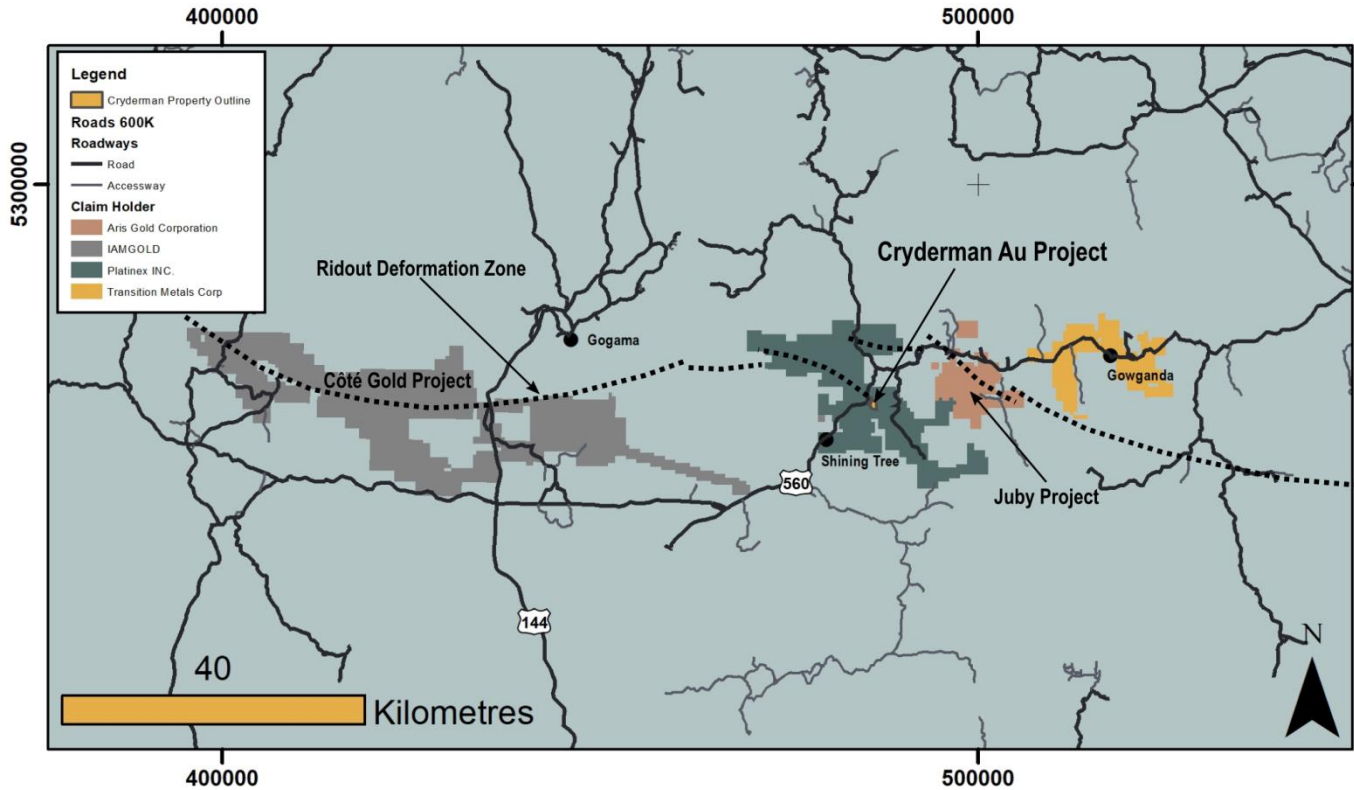


Transition Metals

# Mitigating Risk. Multiplying Opportunities.

▶ XTM – TSXV | Cryderman Gold Project

# Cryderman Property



### Shining Tree Area

- SW MacMurchy Township
- ~55 km E of Côté
- ~35 km SE of Gogama
- ~30 km W of Gowganda
- Borders the Platinex Inc. property and private leases



# Property and Historical Work

- ▶ 6 Mineral Leases and 1 mining claim (116 hectares)
- ▶ Located along the regionally significant Ridout Deformation Zone
- ▶ Hosts the Queen Elizabeth Vein
- ▶ 1917: shaft sunk to a depth of 40 feet (12 m)
- ▶ 1943: Conwest Exploration – channel sampled Queen Elizabeth Vein with assays up to 3.19 oz Au/ton over 25 cm
- ▶ No record of drilling





# Historical Queen Elizabeth Trench

Last recorded sample results

- from a ~300 ft long trench

Savage (1949)

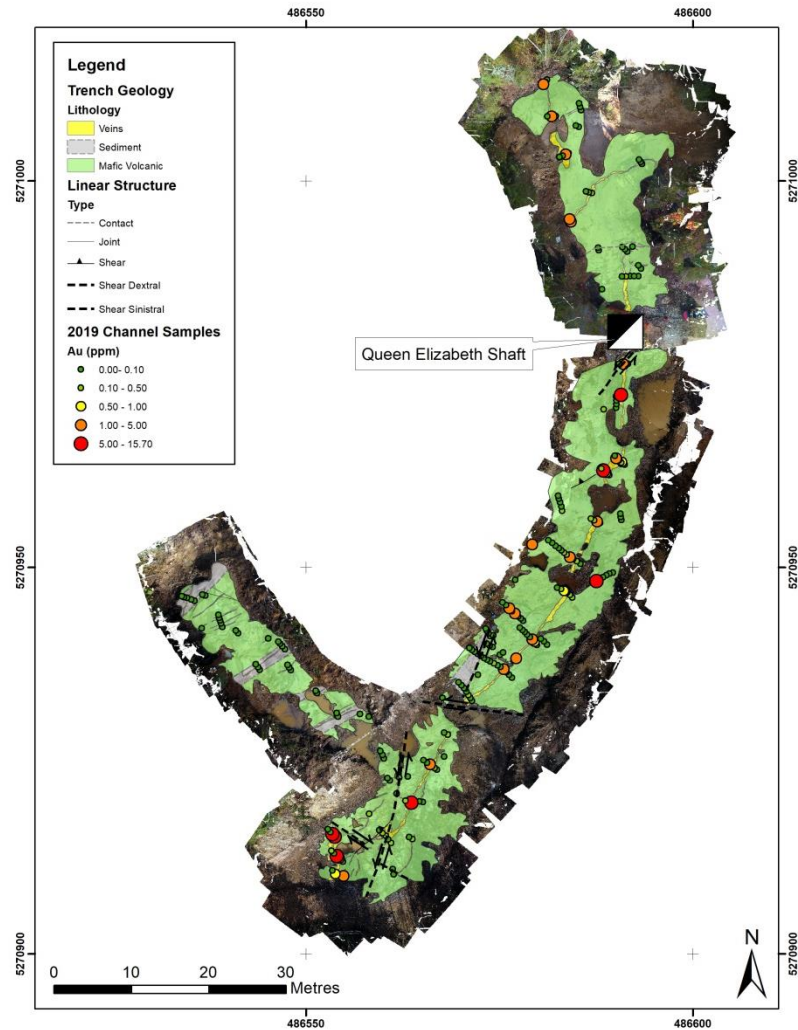
- the vein has a general north-south strike and vertical dip.*
- exposed for over 40 ft. (12.2 m) north of the shaft*
- about 300 ft. (91.4 m) to the south*
- ranges 1 to 3 ft (0.34 to 0.91 m) in width.*
- last bedrock exposure at south end - 8 ft (2.4 m) blowout of quartz on the edge of a swamp*
- wall-rock is contorted schistose mafic metavolcanic with a northeast schistosity dipping steeply northwest*

Sample #	Location	Assay oz/ton	Value @ 1,000 /oz
#1	11' south shaft		
#2	10' south # 1	0.17	170.00
#3	10' south # 2	0.05	50.00
#4	10' south # 3	0.08	80.00
#5	10' south # 4	0.07	70.00
#6	10' south # 5	0.22	220.00
#7	10' south # 6	0.01	10.00
#8	10' south # 7	0.47	470.00
#9	10' south # 8	0.02	20.00
#10	10' south # 9	0.19	190.00
#11	10' south # 10	0.04	40.00
#12	10' south # 11	0.01	10.00
#13	10' south # 12	0.02	20.00
#14	10' south # 13	0.13	130.00
#15	10' south # 14	0.22	22.00
#16	8' south # 15	0.43	430.00
#17	12' south # 16	0.51	510.00
#18	8' south # 17	0.20	200.00
#19	14' south # 18	TR	TR
#20	8' south # 19	0.30	900.00
#21	10' south # 20	0.19	190.00
#22	10' south # 21	0.60	600.00
#23	10' south # 22	0.23	230.00
#24	10' south # 23	3.19	3,190.00

# 2019 Re-opening The Queen Elizabeth Vein

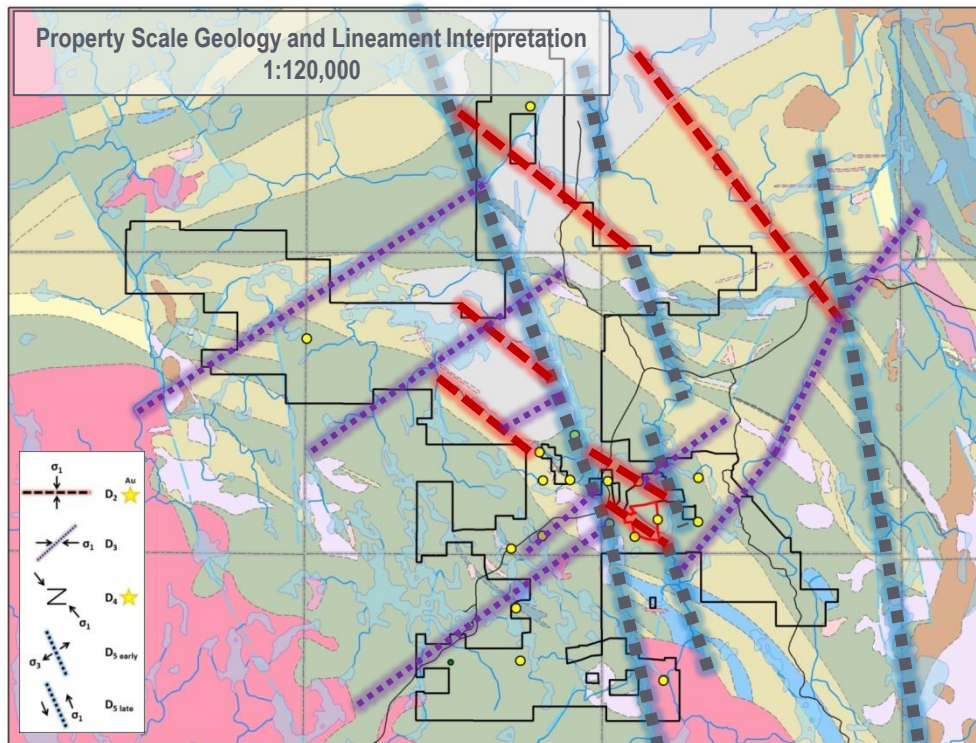
Sample Number	Easting	Northing	Sample Length (cm)	Lithology	Au ppm	Ag ppm	Cu ppm	Te ppm
P240911	486563.6	5270919.6	49	Vein Quartz-carbonate	15.7	2.86	339	0.68
L785780	486590.8	5270972.3	54	Vein Quartz-carbonate	11.55	3.04	162.5	0.32
P240894	486553.7	5270915.2	47	Basalt Foliated	11.3	3.51	170	0.37
L785748	486587.6	5270948.2	57	Basalt Foliated	9.31	1.62	67.9	<0.05
P240895	486553.4	5270915.5	60	Vein Quartz-carbonate	7.46	1.24	168	0.14
L785764	486588.5	5270962.5	40	Vein Quartz-carbonate	6.26	0.88	379	0.25
P240891	486554.0	5270912.7	39	Vein Quartz-carbonate	5.6	1.97	342	0.56
L785715	486577.0	5270944.0	63	Basalt Foliated	4.83	0.23	85.4	0.06
P240890	486554.3	5270912.4	38	Vein Quartz-carbonate	4.37	1.04	282	0.46
L785799	486581.8	5271008.4	61	Vein Quartz-carbonate	4.11	0.38	103.5	0.06
L785787	486584.3	5270994.7	38	Vein Quartz-carbonate	3.99	0.04	124	<0.05
P240924	486566.1	5270924.5	39	Vein Quartz-carbonate	3.93	1.85	108.5	1.48
L785717	486576.3	5270944.7	65	Basalt Foliated	3.92	0.11	55.6	<0.05
L785731	486579.3	5270953.0	34	Basalt Foliated	3.49	0.13	232	0.07
L785807	486580.7	5271012.5	48	Basalt Foliated	3.45	0.28	51.4	0.09

XTM:TSXV

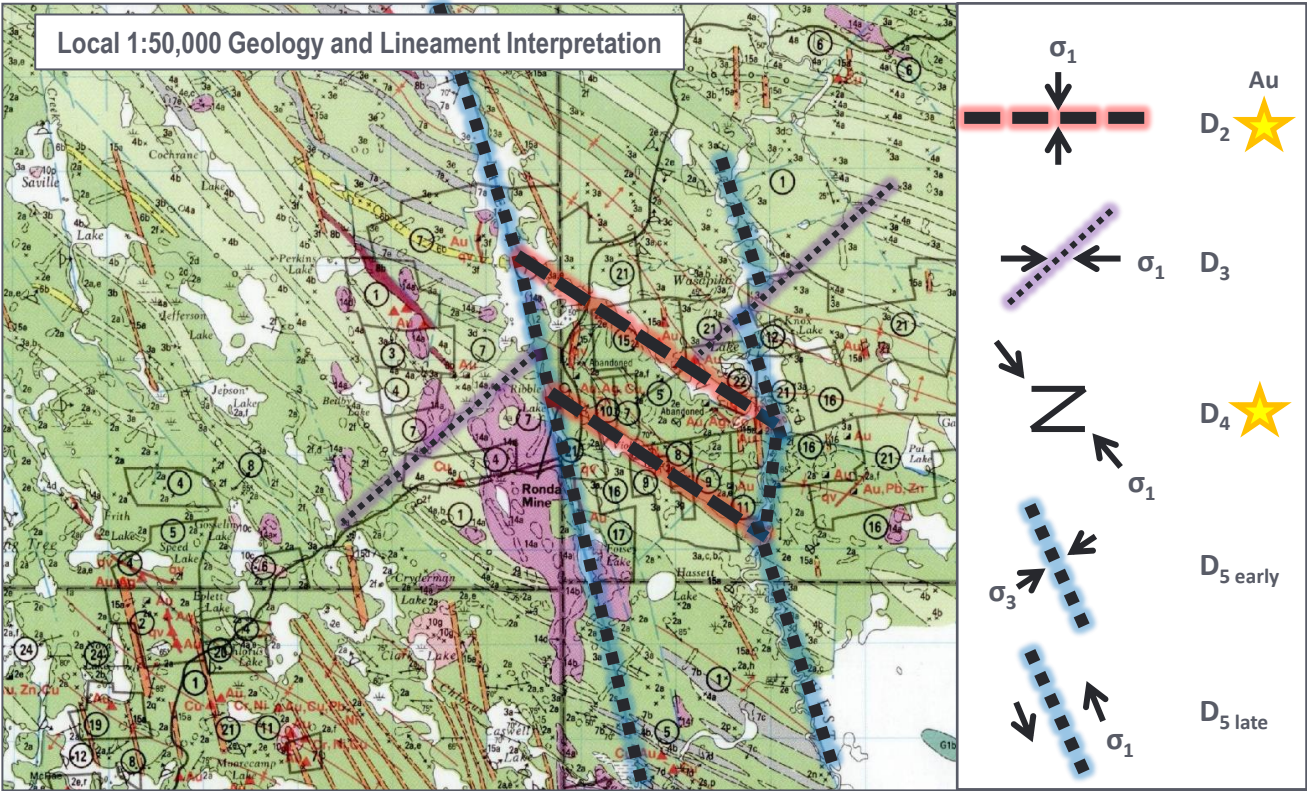


# Shining Tree Lineament Interpretation

- The lineament interpretation was completed using the provincial scale geology with the mapped and interpreted structures, combined with topographic and geographic features such as waterbodies and waterways.
- The interpretation uncovered the potential for 6 deformation events, with gold mineralization associated to the N-S shortening  $D_2$  and the NW-SE shortening  $D_4$  events.



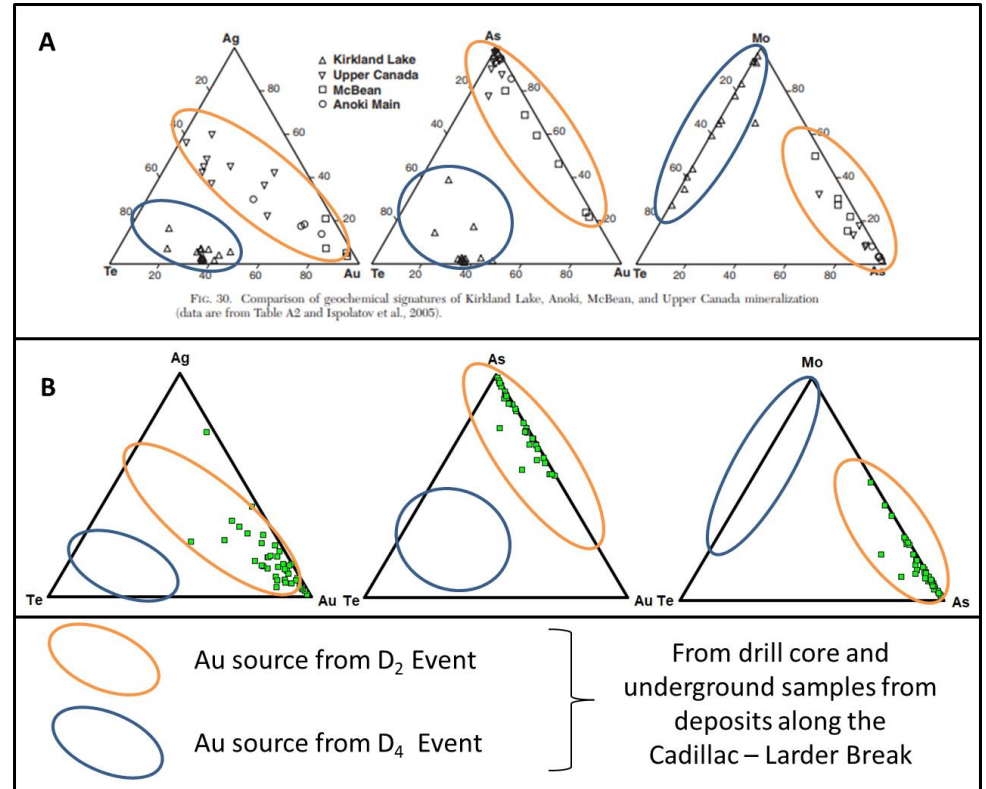
# Property Lineament Interpretation





# Queen Elizabeth Trench Chemical Signature

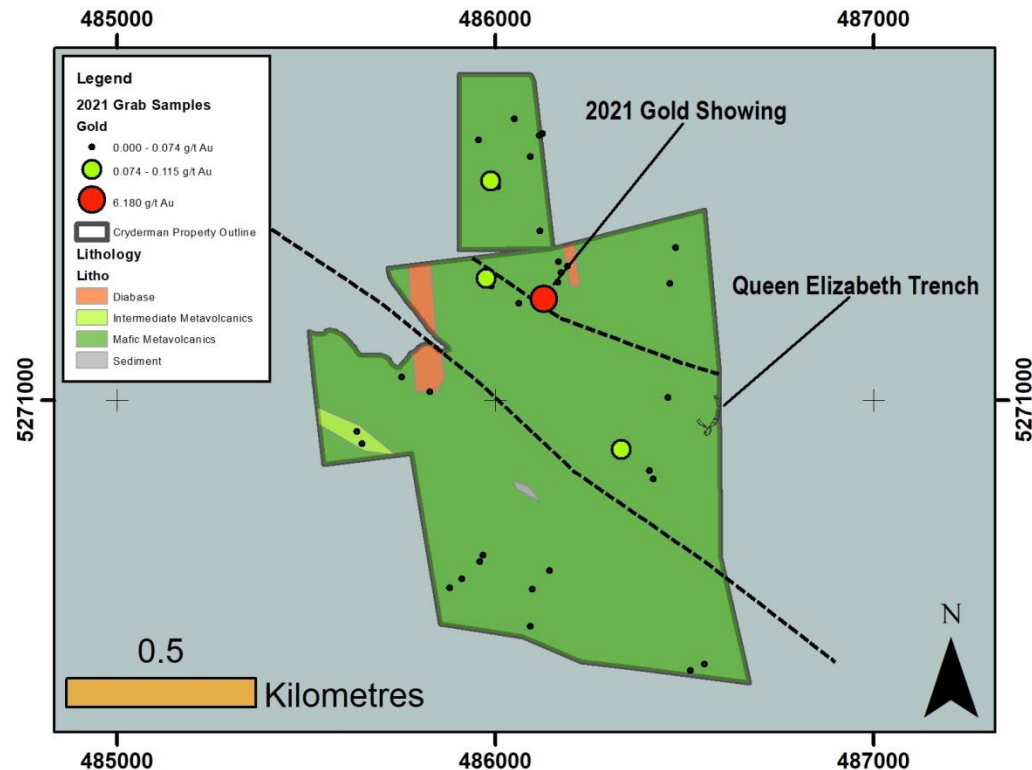
- Chemistry suggests that the mineralization style of the Queen Elizabeth vein is of D<sub>2</sub> origin, with no distinguishing D<sub>4</sub> Tellurium signature prevalent in the Kirkland Lake camp.
- This would indicate that D<sub>2</sub> structures should be the main target for further investigation.
- There remains a possibility that re-mobilization of mineralization has occurred so other structures (D<sub>3</sub>?) should not be discounted.





# Next Steps

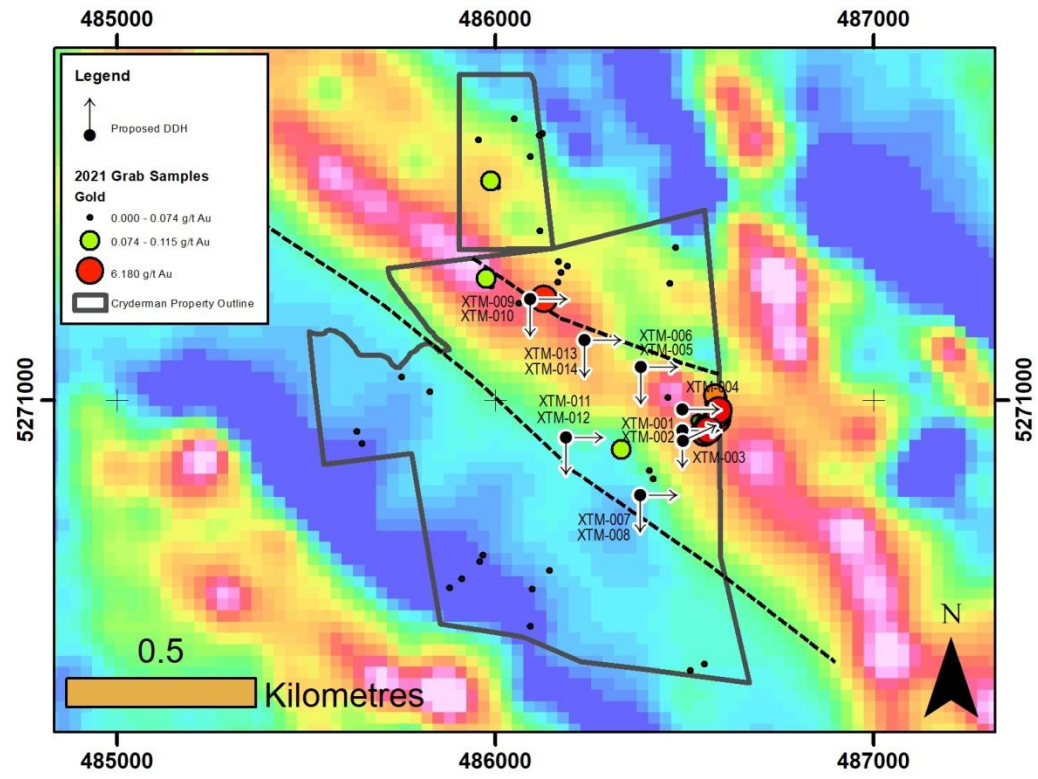
- Prospecting and detailed mapping should be completed across the entirety of the property, with a particular focus on the Violet Lake trend and structure.
- Trenching, mapping, and channel sampling should be completed on new exposure(2021 Gold Showing).
- Whole-rock geochemical data should be collected across the property for alteration mapping and lithological classification.
- Thin-section work should be completed to determine the timing of mineralization, in conjunction with further structural interpretations.
- Walking mag should be completed across the property, and appropriately leveled using rock properties data to remove noise from non-mineralized diabase dykes.
- The Queen Elizabeth vein should be drill tested.



# Proposed DDH Targets



Area	DDH ID	Easting	Northing	Azimuth	Dip	Length
Cryderman	XTM-001	486495	5270921	90	45	134
Cryderman	XTM-002	486495	5270921	180	45	141
Cryderman	XTM-003	486495	5270891	65	45	141
Cryderman	XTM-004	486494	5270976	90	45	141
Cryderman	XTM-005	486384	5271087	90	45	141
Cryderman	XTM-006	486384	5271087	180	45	156
Cryderman	XTM-007	486382	5270750	90	45	141
Cryderman	XTM-008	486382	5270750	180	45	141
Cryderman	XTM-009	486092	5271267	90	45	141
Cryderman	XTM-010	486092	5271267	180	45	141
Cryderman	XTM-011	486187	5270902	90	45	141
Cryderman	XTM-012	486187	5270902	180	45	141
Cryderman	XTM-013	486236	5271160	90	45	170
Cryderman	XTM-014	486236	5271160	180	45	170



# Forward-looking Statements

---

Certain information contained in this presentation, includes information and statements which may contain words such as "could", "plans", "should", "anticipates", "expect", "believe", "will", "upcoming" and similar expressions and statements relating to matters that are not historical facts are forward-looking information. All of the forward-looking information contained in this presentation is qualified by this cautionary statement. There can be no assurance that the actual results or developments anticipated by Transition Metals Corp as expressed or implied by the forward-looking information, will be realized or, even if substantially realized, that they will have the expected consequences to or effects on Transition Metals Corp or its business operations. Transition Metals Corp disclaims any intention or obligation to update or revise any forward-looking information as a result of new information or future events. Readers should not place undue reliance on forward-looking information.



# Mitigating Risk. Multiplying Opportunities.

Scott McLean HBS<sup>c.</sup>, P.Geo.  
CEO & Co-founder

smclean@transitionmetalscorp.com  
9C – 1351 Kelly Lake Road  
Sudbury ON P3E 5P5  
Telephone: 705-669-0590